

[www.justdouble.online](http://www.justdouble.online)



**JUST  
DOUBLE**

**JOIN NOW**





**DOUBLE**  
YOUR INVESTMENT

**IN JUST 5 DAYS**



**JUST DOUBLE**



# ABOUT US



**JUST  
DOUBLE**



We have built enviable reputation in consumer goods, heavy industry, high tech, manufacturing, medical, vehicle, transportation seeds works sectors. multi disciplinary team of engineering & experts, who loves who pursues desires to obtains pains itself explain.

Great explorer of the truth, the master-builder of human happiness rejects dislikes avoids pleasure itself, because it is how to extremely.

Desires to obtain pain of itself it is pain, but because occur in which toil pain can procure him some great take a trivial undertakes.



# MISSION



**JUST  
DOUBLE**



**JUST DOUBLE is Enriched with the Spirit of Honesty, Integrity, Credibility and Smart Work Which will Result in the Prosperity of all Individuals. Every aspect of the Company is Designed to Empower It's Associates and to Create Vibrant Professionals with Unparalleled Training and Business Strategies. Thus, We want to Create 1 Million Success Stories & Form a Benchmark in the Year 2021.**



# VISION



**JUST  
DOUBLE**



**We Aim to Bring Highest Quality of Life & Economic Empowerment to People Through Enhancement of Wide Variety of Product and Services.**

**We also Aim to Focus on those Who Wish to be Trained to**

**Self-Employment Through the Power of Multi-Level Marketing with Wide Variety of Product and Services.**

**Thus, It will Help People Live a Life of Economic Independence on Their Own Terms.**



# LEGALS DOCUMENTS



JUST  
DOUBLE

**आयकर विभाग**  
INCOME TAX DEPARTMENT

**भारत सरकार**  
GOVT. OF INDIA

**स्थायी लेखा संख्या कार्ड**  
Permanent Account Number Card

**CHGDC7098L**

**भारत सरकार**

**नाम / Name**  
**JUST DOUBLE**

**निगमन / गठन की तारीख**  
Date of Incorporation / Formation

**07/06/2025**

**भारत सरकार**  
Govt. of India

**सूक्ष्म, लघु और मध्यम उद्यम मंत्रालय**  
MINISTRY OF MICRO, SMALL & MEDIUM ENTERPRISES

**MSME**  
MICRO, SMALL & MEDIUM ENTERPRISES

**उद्योग आधार**  
Udyog Aadhaar

**MSME**

**D**

Type of Enterprise	Micro	Small	Medium
Manufacturing	A	B	C
Services	D	E	F
UAN	MH10256789		

**Udyog Aadhaar Registration Certificate**

Udyog Aadhaar Number: MH10256789

Name of Enterprise: JUST DOUBLE

Location of Plant Details

SN	Flat/Door/Block No.	Name of Premises/Building Village	Road/Street/ Lane	Area/Locality	Pin	State	District
1	06/790	NEAR MANGAL THEATRE	SHIVAJI ROAD	SHIVAJI NAGAR	411005	MAHARASHTRA	PUNE

Official Address of Enterprise: 06/790 NEAR MANGAL THEATRE, SHIVAJI ROAD, SHIVAJI NAGAR, PUNE, MAHARASHTRA - 411005

District: PUNE State: MAHARASHTRA PIN: 411005

Mobile No: 8730068459 Email: justdouble@gmail.com

Date of commencement: 07/06/2025

Major Activity: SERVICES

Enterprise Type: Micro

Previous Registration details if any: -

National Industry Classification Code

SN	NIC 2 Digit	NIC 4 Digit	NIC 5 Digit Code	Activity Type
1	73 - Advertising and market research	7320 - Market research and public opinion polling	73200 - Market research and public opinion polling	Services

Acknowledgement: Date of Filing: 07/06/2025 Date of Printing: 07/06/2025

Disclaimer: This is computer generated statement, no signature required.  
Printed from udyogaadhaar.gov.in

MyMSME Mobile App (Beta Version) is available now for download: <https://play.google.com/store/apps/details?id=com.meme.mysmsme>



# ADDRESS



JUST  
DOUBLE

A



**Sector 110, Noida Gautam  
Buddha Nagar, Uttar Pradesh  
Pin - 201301**

**9793397258**



WWW.JUSTDOUBLE.ONLINE



# JUST DOUBLE

**JOIN NOW**



# JOINING PACKAGES



JUST  
DOUBLE

500

1000

2500

5000

10000

20000

50000

75000

100000



# TYPES OF INCOME



**JUST  
DOUBLE**

**1. DIRECT INCOME**

**2. ROI INCOME**

**3. LEVEL INCOME**

**4. REWARD INCOME**

**5. ROYALTY INCOME**

**WWW.JUSTDOUBLE.ONLINE**



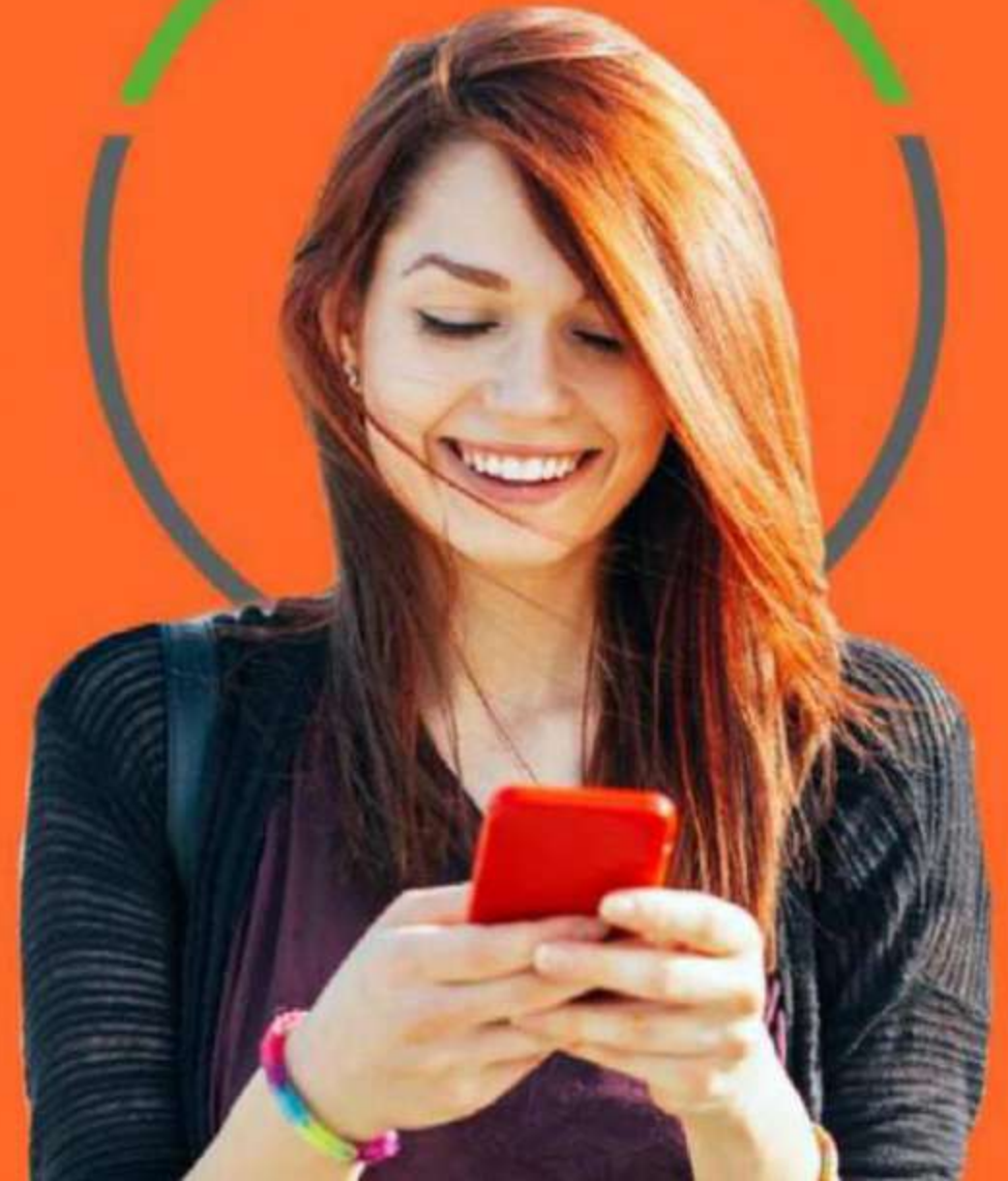


**JUST  
DOUBLE**

**1.**

**DIRECT INCOME**

**50%**







JUST  
DOUBLE

2.

## ROI INCOME

PACKAGE	DAILY ROI%	PER DAY	DAYS	TOTAL INCOME
500	40%	200	5	1000
1000	40%	400	5	2000
2500	40%	1000	5	5000
5000	40%	2000	5	10000
10000	40%	4000	5	20000
20000	40%	8000	5	40000
50000	40%	20000	5	100000
75000	40%	30000	5	150000
100000	40%	40000	5	200000



**3.**

## LEVEL INCOME



**JUST  
DOUBLE**

LEVEL

**Level 1**  
**10%**

**Level 2**  
**5%**

**Level 3**  
**3%**

**Level 4**  
**2%**

**Level 5**  
**1%**

**Level 6**  
**1%**

**Level 7**  
**1%**

**Level 8**  
**1%**

**Level 9-10**  
**1%**

**Level 11-50**  
**1%**

INCOME





JUST  
DOUBLE

4.

## REWARD INCOME

BUSINESS	DAYS	REWARD
5000	1	500
10000	2	1000
25000	3	2500
50000	3	5500
100000	4	11500





5.

## ROYALTY INCOME



JUST  
DOUBLE

20000 की आईडी लेने पे ROI इनकम  
7 दिन मिलेगा

50000 की आईडी लेने पे ROI इनकम  
10 दिन मिलेगा





# BANK DETAILS



## UCO BANK

**NAME** — **JUST DOUBLE**

**AC/NO** — **05490110127018**

**IFSC** — **UCBA0000921**

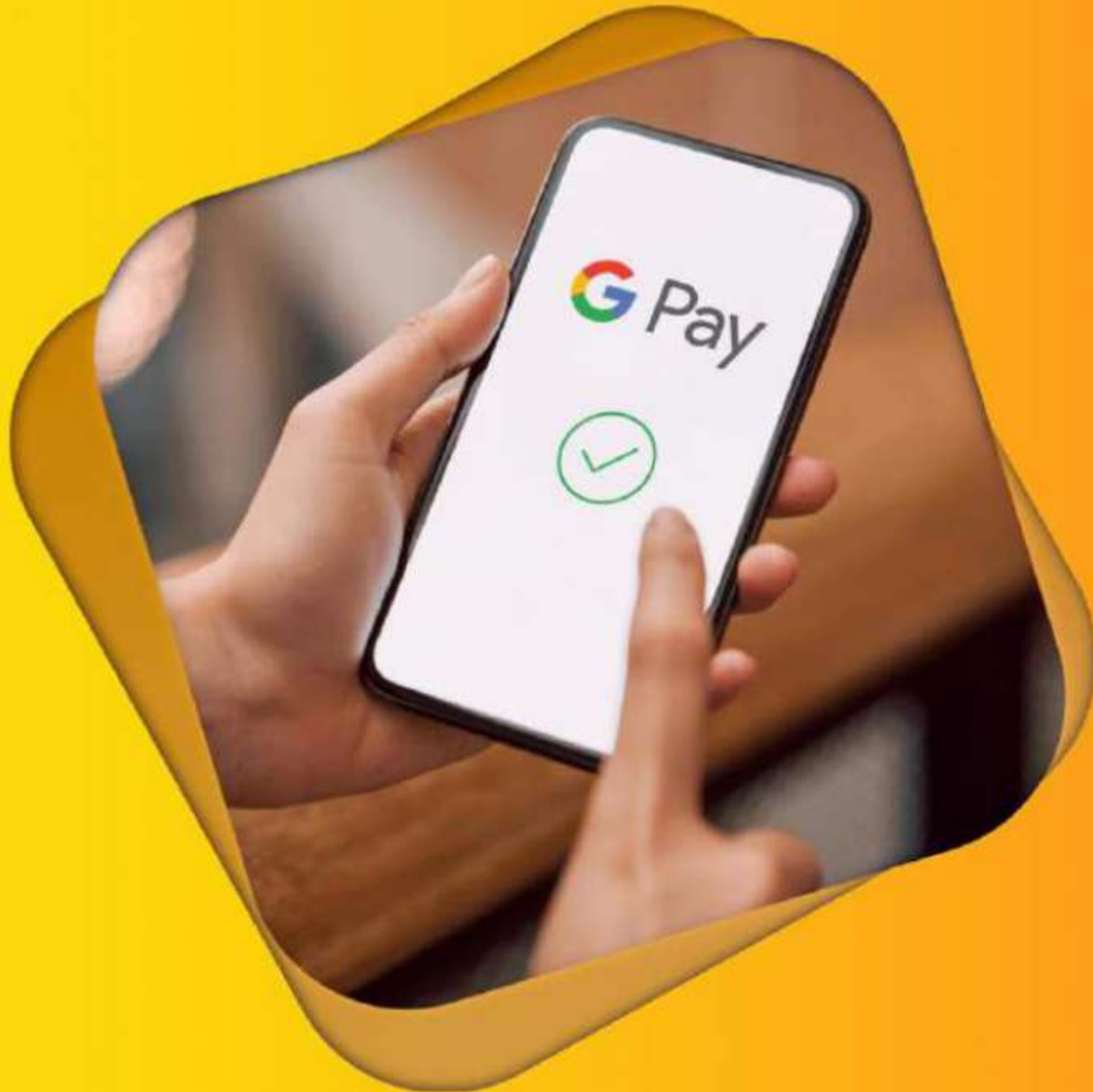




# UPI DETAILS



JUST  
DOUBLE





# COMPANY CONTACT



9793397258



[www.justdouble.online](http://www.justdouble.online)



CALL NOW



# TERMS & CONDITIONS



JUST  
DOUBLE

**DAILY CLOSING & DAILY WITHDRAWAL**

**MINIMUM WITHDRAWAL 300**

**WITHDRAWAL 11 AM TO 5 PM**

**IMPS WITHDRAWAL AVAILABLE**

**ADMIN CHARGE 10%**

**7 DAYS WITHDRAWAL**





[www.justdouble.online](http://www.justdouble.online)



# JUST DOUBLE

**JOIN NOW**